

We will be playing this Bingo game at the March 2021 Retreat. Have your card(s) ready to go and something to mark the squares that will be called. Four prizes will be awarded:

**First straight** horizontal or vertical 4 in a row

**First 4 corners**

**First diagonal** 4 in a row

**First Blackout**

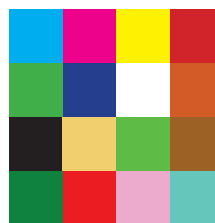
## Spring Retreat Quilt Bingo

Make your own fabric card(s) to play this game. It won't be played like a typical Bingo game where a letter and number are called. We won't be using columns or rows to call out at all. It's more of a free-for-all card. We'll call the different subjects from the list and you mark your squares with a pin, button, bean, candy, or ????. The cards will have only 4 squares across and 4 squares down. You may want to tag your squares with painter's tape or a post-it to remind you what each fabric represents.

Getting ready for Quilt Bingo is almost as fun as playing the game, since making your game cards ahead of time allows you to rediscover many of the great fabrics in your stash. As with traditional bingo, the more cards you have in front of you when the playing starts, the more chances you have to win.

Option: If you'd like to donate one (or more) of your Bingo cards, we'll stitch them together to make a charity quilt!

This example shows the 4x4 layout. The colors you choose may be completely different than this.



### Game Card Instructions

Materials for one 12½" card:

Choose 16 fabrics from your stash to represent *16 different things from the list using any colors you wish*. There's lots to choose from. If you don't have enough in your stash, put a call out to other members and see what we have to share. Use your embroidery machine, or hand draw (with fabric markers) or embroider a simple picture of the subject you wish to use.

Cut each into a 3½" square.

Block Assembly:

1. Referring to illustration of block and using a scant ¼" seam allowance, join 4 squares to make one 12½" row. Repeat for 3 more 12½" rows.

2. Join rows together to make a 12½" square.

You can also stitch around the edge at 1/8" to keep it from fraying.

Look for these fabrics in your stash to make your Spring Bingo card(s)

Ant	Chocolate	Leaves	Spring Flowers
Apple	Clock	Light Blue	Spring Green
Baby animal	Coins	Metallic	Strawberries
Basket	Earth	Music	Sun
Bike	Egg	Peeps	Water
Birds	Fish	Piggy	Whales
Bunny	Fruit	Pink	White
Butterfly	Gingham	Potato	Wine/Grapes
Carrot	Grass	Pyramid	Yellow
Cheese	Honey Bee	Rainbow	
Chicken	Lady Bug	Sewing Notion	