

# OMBRE HAND DYES

Fabric by Marcus Fabrics  
Quilt by Nancy Rink of Nancy Rink Designs



Rainbow Square Quilt

40" x 60"

Finished Quilt Size: 40" x 60" • Finished Block Size: 10" x 10"

**Fabric Requirements**

- One Ombre Hand Dyes Strip Roll # ST01
- ½ yard Centennial Solid Rare Wine # 5901-1174 for binding
- 2 2/3 yards backing fabric

**General Information:** PLEASE READ BEFORE UNROLLING THE JELLYROLL.

In your jellyroll are two strips each of twenty different fabrics. Each strip should measure 2½" wide by approximately 44" long. Each strip has an ombre effect where the color graduates from a deeper shade at the selvedge to light in the middle back to the deeper shade at the opposite selvedge.

In the quilt shown, like analagous colors (those next to each other on the color wheel) are grouped together to create the blocks: reds are grouped with reds and pinks, oranges are grouped with golds and yellows, greens are grouped with olives and greenish-browns, and purples are grouped with reddish-browns. The jellyroll should already reflect this sense of organization. If you unroll it carefully and keep the strips in order, the guess-work of how to organize the strips is already done for you.

**Sewing**

1. To begin, unroll the jellyroll and remove the first two strips. These strips should be identical. Cut them in half along the fold. This yields four strips approximately 22" long on which the color graduates from light to dark. Lay the strip out as shown in Diagram I, stacking one on top of the other.



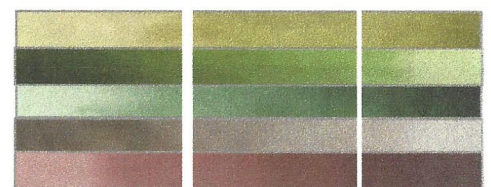
Diagram I

Remove the next two strips and cut in half along the fold. Lay out this set of matching strips so that the light and dark ends are in the reverse position of those of the first strip. Sew these two strips together. Press all seams in the same direction. (Diagram I)



Diagram II

2. Now, remove the next two strips from the jellyroll, cut them in half, and lay them out, once again reversing the position of the light and dark ends of the strip. Sew strip to the first two. Press all seams in the same direction. Continue adding strips in this manner until you have four strip-sets with five strips. (Diagram II)

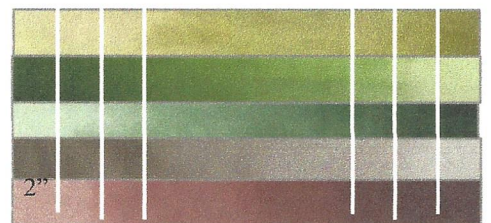


9 ¾"

Diagram III

3. Cross-cut THREE of the matching strip-sets into six 9 ¾"-wide segments. (Diagram III)

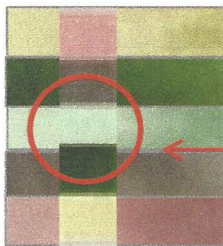
4. Cross-cut the remaining strip-set into six 2"-wide segments. Note: if you cut three strips from one end and three from the other, your blocks will have more dramatic color shifts. (Diagram IV)



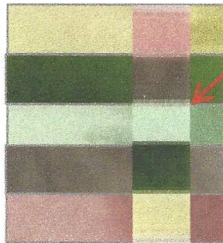
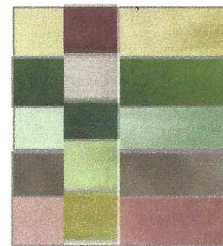
2"

Diagram IV

5. The next step involves sewing the 2" wide strip into the 9 ¾" segment. However, before you cut a 9 ¾"-wide strip-set, audition various 2"-wide strips by laying one at a time on top of a 9 ¾" segment. Make sure to reverse the direction of the 2" wide strip. You will notice that the look of the blocks changes depending on where you place the strip.



Notice what happens with the middle strip. There is not much difference in color here. Shifting the strip toward the right side of the block may be a solution.



Or, addition another strip. This one, which is cut from the other end of the strip set, provides a stronger contrast.

6. Measure 3" from one end of the 9 3/4" segment. Cut vertically. Sew 2" strip in between the two parts, matching seams. Press. Trim block to 10 1/2" square. (Diagram V)

7. Repeat steps 1-6 using the remaining jellyroll strips. Make a total of 24 blocks.

Quilt Assembly

1. Layout quilt blocks in 6 rows of 4 blocks each. Refer to picture of quilt or to any of the layout options shown below. Sew blocks together in rows; then, sew together the rows.

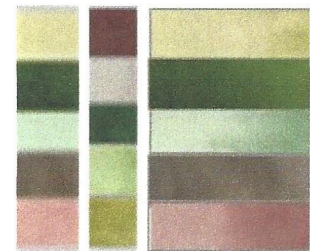
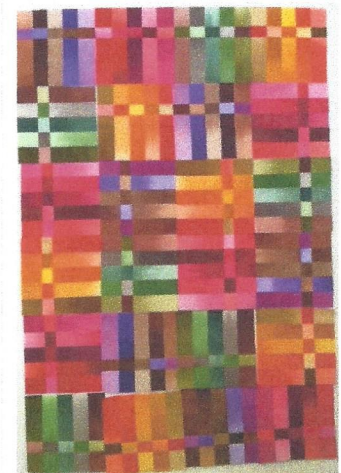
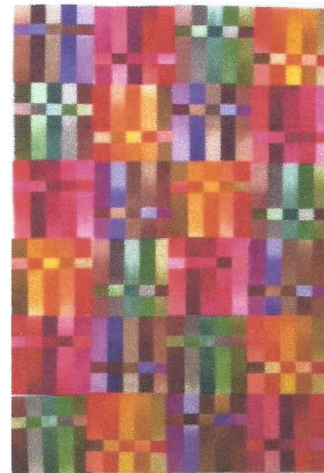


Diagram V

Finishing

1. Layer top, batting, and backing (two 41 x 47" panels). Quilt in an all-over design.

2. Bind with Centennial Solid Rare Wine fabric, cut into 2 1/4"-wide strips.



Quilt Layout Options



Visit [www.nancyrinkdesigns.com](http://www.nancyrinkdesigns.com) for more patterns and quilt ideas and kits