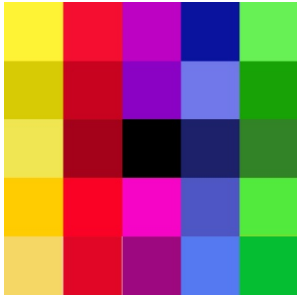


Quilt Guild Bingo from Fons & Porter

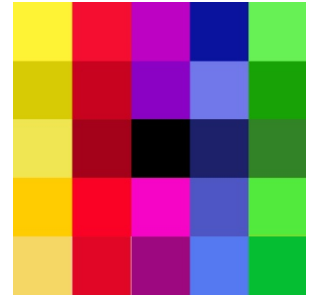
We've changed this up just a bit, so even if you've played before, please read these instructions. Words in " " are from their magazine (Fons & Porter's Love of Quilting Sept/Oct 2006).

"Getting ready for Quilt Guild Bingo is almost as fun as playing the game, since making your game cards ahead of time allows you to rediscover many of the great fabrics in your stash. As with traditional bingo, the more cards you have in front of you when the playing starts, the more chances you have to win." *Option:* If you'd like to donate one (or more) of your Bingo cards, we'll stitch them together to make a charity quilt!

Use button, pins, clips, or whatever is handy in your sewing space to mark your squares.



BINGO!



Game Card Instructions

Materials for one 10½" card: Think of each color as a letter in BINGO.

Yellow/Orange is B, Red is I, Purple/Pink is N, Blue is G, Green is O.

Now think of the fabric categories as the numbers.

"Each fabric must be chosen from one of the following categories: batik, floral, geometric, heart, leaf, metallic, holiday, novelty, paisley, plaid, solid, star, stripe, or 1930s print. Use a black print for the center square."

You'll need:

Five 2½" squares assorted yellow and/or orange prints

Five 2½" squares assorted red prints

Five 2½" squares assorted purple and/or pink prints

Five 2½" squares assorted blue prints

Five 2½" squares assorted green prints

One 2½" square black print

Block Assembly

1. Referring to illustration of block and using a scant ¼" seam allowance, join 5 yellow/orange print squares to make 1 row. In the same manner, make 1 red, 1 blue, and 1 green row.
2. Join 2 purple/pink squares. Make 2 purple/pink pairs. Join one pair to each side of black square to complete purple/pink row.
3. Join rows as shown in above illustration to complete 1 Bingo Game Card Block. Make more with different categories for a better chance to win! Please make sure your cards measure 10 ½" if you plan to donate them. You can also stitch around the edge at 1/8" to keep it from fraying.