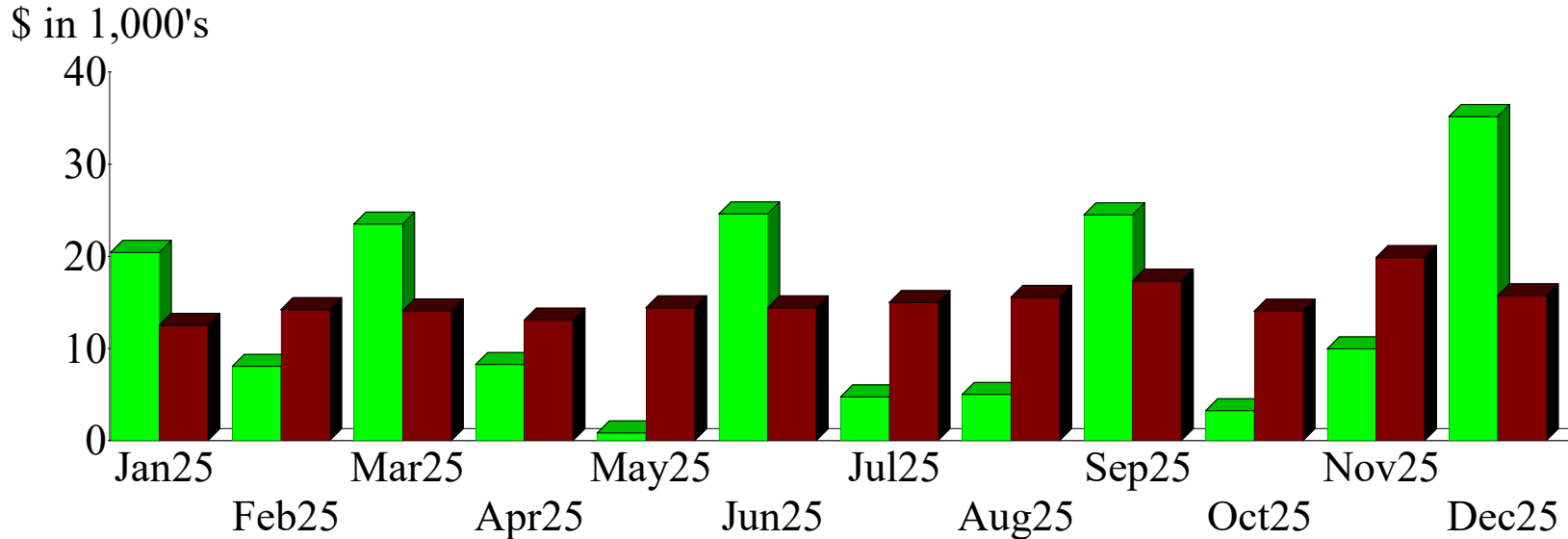
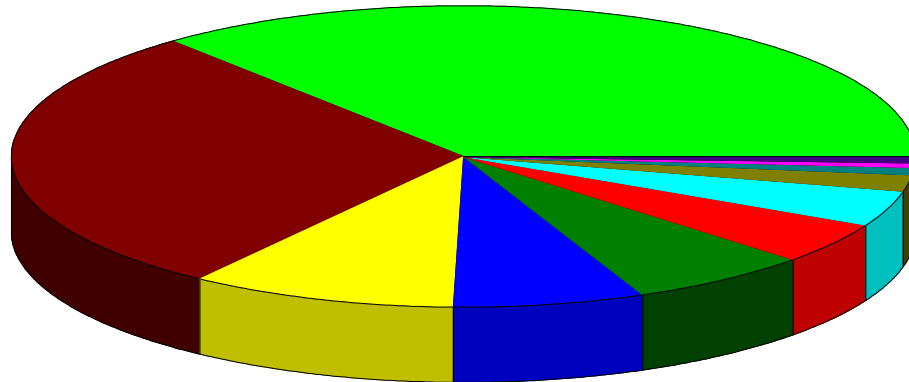


Income and Expense by Month January through December 2025



Expense Summary January through December 2025



-COMP	36.16%
-FEES for Service (non-emp)	29.00
-TRAV & Auto	9.55
-OCCUP	6.90
-GRANTS & Aid	6.57
-OFFICE	4.56
-CONF & Meetings	3.89
-INFO Technology	1.77
-OTHER Exp	0.86
-INSUR	0.48
Other	0.27
Total	\$180,270.25

By Account